



Hot Foil Price List

www.hotfoilstampingmachines.com cplsales@print1.co.uk
Tel: 01708-731294 Intl: 0044 1708-731294



Call us free on
Whatsapp: 07438-88 9435
Overseas: 0044 7438-88 9435
or chat with us

Quick reference **PRICE LIST SUMMARY**



The #1 Manufacturer of
Hot Foil Stamping Machines
for Personalization

We ship worldwide - Low shipping rates

Our Foilcraft Hot Foil Stamping Machines are used worldwide to emboss and deboss onto many leather items such as:-

- * Mobile Phone Cases
- * Wallets
- * Handbags
- * Cosmetic Bags
- * Luggage Tags
- * Key Fobs
- * Passport Covers
- * Bibles
- * Credit Card Wallets
- * Pencils
- * plus many more items!

All samples below were embossed using our Foilcraft Machines

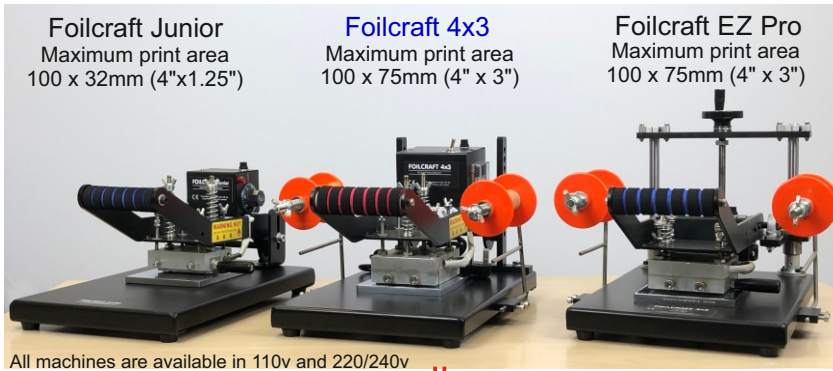


Did you know that we are the only company to offer you a 'free testing service' before you buy!

Simply send us your products and we will test print onto them to ensure that our machines are suitable for your needs.

Test printing service is available subject to our T&C's as displayed on our website.

Firstly, select your machine and then add any accessories, as required - that's all there is to it!



Do you require Metal Letters?
If so, do you require them in Capitals & Lowercase or Capitals only?
Also what point size and style?

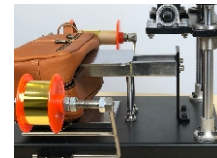
Do you require Brass Letters?
If so, do you require them in Capitals & Lowercase or Capitals only?
Also what point size and style?



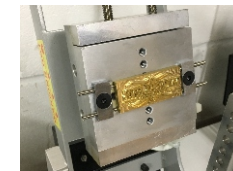
Slip Cases or Self-Centering Type Holders
How many lines do you wish to print in one go (eg, just one line for initials or more?) This will determine how many Slip Cases you will need



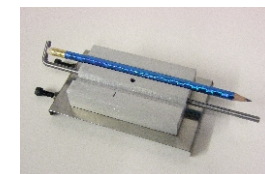
Floating Bed
If are opting for the Foilcraft 4x3, then do you require the Floating Bed to print onto Bags?



Lock-A-Block
If you intend to use 1/4" thick dies on the Foilcraft 4x3, then do you require the Lock-A-Block to make attaching and removing of dies easier?




Pencil Holder
If you wish to print onto pencils, then you will require our optional Pencil Holder which works with the Foilcraft Junior and the Foilcraft 4x3



Foils
We supply a standard grade metallic gold foil free with each machine, do you require any other colours or premium grade foils?

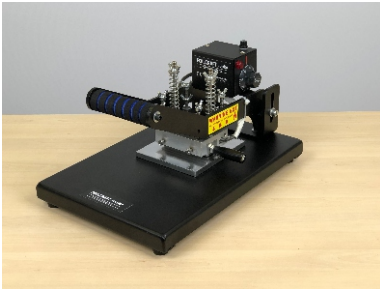


Need help?



Call us free on
Whatsapp: 07438-88 9435
Overseas: 0044 7438-88 9435
or chat with us

You can also send us an email to
cplsales@print1.co.uk
or call us Mon-Fri on
01708-731294
(Overseas: 0044 1708-731294)




Foilcraft Junior Machine

Foilcraft Junior is our smaller hot foil stamping machine with a maximum print area of approximately 4" x 1.25"

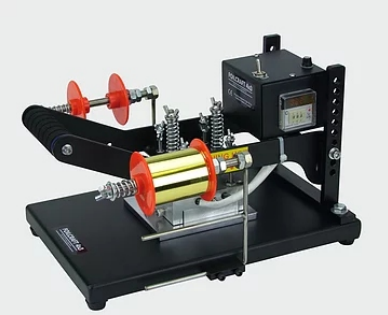
GBP  from 795.00

EUROS  from 885.00

USD  from 995.00

AUD  from 1415.00

INR  from 70,499.00



Foilcraft 4x3 Machine

Foilcraft 4x3 is our larger hot foil stamping machine with a maximum print area of 4" x 3". It also accommodates the optional extras of the Floating Bed and Lock-A-Block Attachments.

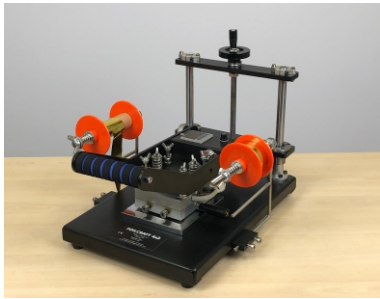
GBP  from 995.00

EUROS  from 1107.00

USD  from 1245.00

AUD  from 1775.00

INR  from 88,244.00



Foilcraft EZ Pro

Foilcraft EZ Pro is our larger hot foil stamping machine with a maximum print area of 4" x 3" together with EZ Lift for easy height adjustment.. It also accommodates the optional extras of the Floating Bed and Lock-A-Block Attachments.

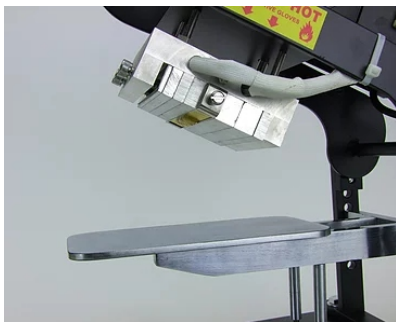
GBP  from 1195.00

EUROS  from 1338.40

USD  from 1545.00

AUD  from 2250.00

INR  from 106,355.00



Floating Bed Attachment

This acts very much like an ironing board whereby you can slip your bag over the floating bed which could make it easier to print your bags by ensuring a flatter surface.

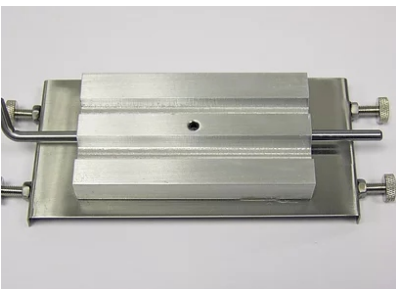
GBP  125.00

EUROS  139.00

USD  155.00

AUD  221.00

INR  11,088.00



Pencil Holding Attachment

A useful device which holds hexagonal pencils in place whilst printing. Fits both machines.

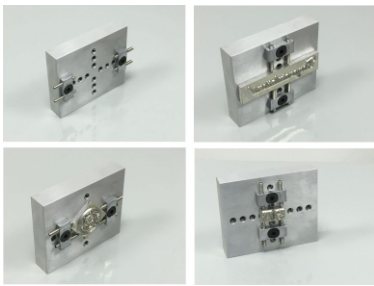
GBP  60.00

EUROS  67.00

USD  75.00

AUD  106.00

INR  5,322.00



Lock-A-Block Attachment

Suitable only for the Foilcraft 4x3. The Lock-A-Block allows you to quickly secure a die and remove a die. This not only helps to avoid any potential damage to your die, but also saves you a great deal of time too.

GBP 
60.00

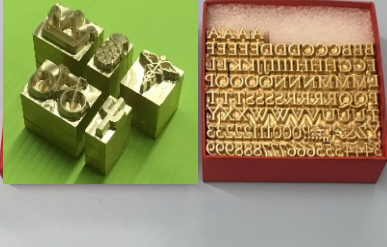
EUROS 
67.00

USD 
75.00

AUD 
106.00

INR 
5,322.00

We also make
Emojis!



Brass Letters

Prices can be viewed on Page 7 here and for font choice, please download the catalogue from our website.

GBP 
from 225.00

EUROS 
from 251.00

USD 
from 280.00

AUD 
from 398.00

INR 
from .19,959.00

18pt 24pt 30pt 36pt



4.5mm 6.5mm 7.5mm 9.5mm
(Approximate height of letters)


Economy Metal Letters - Please refer to page 8 here

GBP 
from 37.00

EUROS 
from 42.00

USD 
from 46.00

AUD 
from 66.00

INR 
from 3,282.00



Brass Die Making Service - Please Enquire

GBP 
from 40.00

EUROS 
from 45.00

USD 
from 49.00

AUD 
from 72.00

INR 
from 3,544.00



Slippcases

Available in size from 10pt-48pt

GBP 
from 25.00

EUROS 
from 28.00

USD 
from 31.00

AUD 
from 44.00

INR 
from 2,218.00



Prop-up Bars

To support 18pt, 24pt, 30pt, 36pt, 42pt, 48pt

Prop-up Bars are simply placed behind the Slippcase to give it extra depth.

GBP 
6.00

EUROS 
7.00

USD 
8.00

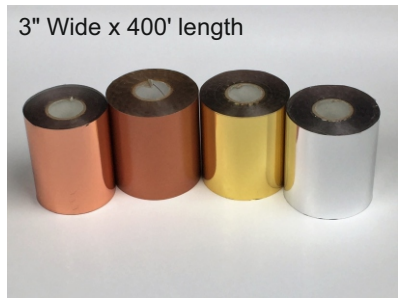
AUD 
11.00

INR 
532.00



3" Standard Metallic Foils

GBP 	EUROS 	USD 	AUD 	INR 
from 9.00	from 10.00	from 11.00	from 16.00	from 798.00



3" Premium/Leather Grade Foils

GBP 	EUROS 	USD 	AUD 	INR 
from 15.00	from 17.00	from 19.00	from 27.00	from 1,331.00



3" Toner Foils

GBP 	EUROS 	USD 	AUD 	INR 
from 15.00	from 17.00	from 19.00	from 27.00	from 1,331.00



Toner Pad

GBP 	EUROS 	USD 	AUD 	INR 
19.99.	23.00	25.00	35.00	1,773.00



Plastic Type Tray

GBP 	EUROS 	USD 	AUD 	INR 
7.00	8.00	9.00	12.00	621.00

Make your notes here:

Prices are subject to change without prior notice. Prices shown exclude shipping and VAT (UK & Europe). If VAT registered in other EU countries, then no extra VAT will be added. No VAT charged also for countries outside the EU. Please note: overseas currencies are shown for guide only and are subject to changes in exchange rates.



Price List for Premium Quality Brass Type

Deep etched for best results

Manufacturing time 2-3 weeks from receipt of order/payment*

Price List April 2019

European Accents also available, please enquire

Size	Description	Style	£ (GBP)	EUROS	USD	AUD
10 PT	100 Pieces	Standard	225.00	257.00	315.00	412.00
10 PT	150 Pieces	Standard	340.00	388.00	476.00	622.00
12 PT	100 Pieces	Standard	230.00	262.00	322.00	421.00
12 PT	150 Pieces	Standard	337.00	384.00	472.00	617.00
14 PT	100 Pieces	Standard	240.00	274.00	336.00	439.00
14 PT	150 Pieces	Standard	355.00	408.00	497.00	650.00
16 PT	100 Pieces	Standard	255.00	291.00	357.00	467.00
16 PT	150 Pieces	Standard	377.00	430.00	528.00	690.00
18 PT	100 Pieces	Standard	265.00	302.00	371.00	485.00
18 PT	150 Pieces	Standard	393.00	448.00	550.00	719.00
20 PT	100 Pieces	Standard	289.00	330.00	405.00	529.00
20 PT	150 Pieces	Standard	425.00	485.00	595.00	778.00
22 PT	100 Pieces	Standard	295.00	336.00	413.00	540.00
22 PT	150 Pieces	Standard	435.00	496.00	609.00	796.00
24 PT	100 Pieces	Standard	313.00	357.00	438.00	573.00
24 PT	150 Pieces	Standard	447.00	510.00	626.00	818.00
26 PT	100 Pieces	Standard	325.00	371.00	455.00	595.00
26 PT	150 Pieces	Standard	480.00	547.00	672.00	878.00
28 PT	100 Pieces	Standard	330.00	376.00	462.00	604.00
28 PT	150 Pieces	Standard	488.00	556.00	683.00	893.00
30 PT	100 Pieces	Standard	335.00	382.00	469.00	613.00
30 PT	150 Pieces	Standard	495.00	564.00	693.00	906.00
32 PT	100 Pieces	Standard	340.00	388.00	476.00	622.00
32 PT	150 Pieces	Standard	503.00	574.00	704.00	921.00
34 PT	100 Pieces	Standard	353.00	403.00	494.00	646.00
34 PT	150 Pieces	Standard	525.00	599.00	735.00	961.00
36 PT	100 Pieces	Standard	365.00	416.00	511.00	668.00
36 PT	150 Pieces	Standard	538.00	613.00	753.00	985.00
48 PT	100 Pieces	Standard	400.00	456.00	560.00	732.00
48 PT	150 Pieces	Standard	590.00	673.00	826.00	1080.00

100 PIECES UPPER CASE COMBINATION
 ABCDEFGHI JKLMNOPQRSTUVWXYZ&Æ. , ' - 0 1 2 3 4 5 6 7 8 9
 4 3 3 3 4 2 2 3 4 2 2 3 3 4 2 2 4 4 4 3 2 2 2 2 1 1 1 1 3 2 2 1 2 2 2 2 2 2 2 2 2 2

How many of each characters you will receive in a 100 or 150 piece set

150 PIECES UPPER CASE COMBINATION
 ABCDEFGHI JKLMNOPQRSTUVWXYZ&Æ. , ' - 0 1 2 3 4 5 6 7 8 9
 6 4 4 4 6 3 2 4 6 3 3 5 5 6 5 3 2 6 7 6 4 3 3 3 3 2 1 1 1 4 2 2 1 3 3 3 3 3 3 3 3 3 3 3

100 PIECES LOWER CASE COMBINATION
 a b c d e f g h i j k l m n o p q r s t u v w x y z
 6 4 4 4 6 3 3 4 6 3 4 4 4 4 6 3 2 5 5 5 5 2 2 2 2 2

Extra letters can be purchased, please enquire

Important!
 Brass Letters are made to order with a lead time of about 2-3 weeks depending on our workload, time of year etc. Full payment is required with order. No refunds can be made for whatever reason for 'Made to order' items. **We cannot be held responsible for delays, however caused. Please plan well ahead if you have any upcoming projects or events.**

Metal Letters

(Cheaper option than brass letters but not as deeply etched)

Prices & Options

10pt Type Capitals £47.00+VAT Lowercase £37.00+VAT
Available in Gill Sans Bold, Perpetua, Univers Light, Univers Medium

18pt Type Capitals £63.00+VAT Lowercase £53.00+VAT
Available in Gill Sans Medium, Gill Sans Bold, Perpetua Bold, Plantin,
Rockwell Medium, Times New Roman, Times Bold,
Univers Light, Univers Medium, Univers Bold

24pt Type Capitals £85.00+VAT Lowercase £75.00+VAT
Available in Gill Sans Medium, Gill Sans Bold, Rockwell
Medium, Times New Roman, Times Bold,
Univers Light, Univers Medium, Univers Bold

30pt Type Capitals £94.00+VAT Lowercase £84.00+VAT
Available in Gill Sans Medium, Gill Sans Bold, Perpetua, Rockwell Medium, Times New Roman, Times Bold,
Univers Light, Univers Medium, Univers Bold

36pt Type Capitals £118.00+VAT Lowercase £108.00+VAT
Available in Gill Sans Medium, Gill Sans Bold, Perpetua, Rockwell Medium, Times New Roman, Times Bold,

48pt Type Capitals £178.00+VAT Lowercase £168.00+VAT
Available in Gill Sans Bold only.

NOTES:-

Metal Type is Cast to the Anglo-American standard depth of 23.31mm (0.918"). The printing height of letters is determined by the point size you select.

The quantity of each letter / character you will receive in a set of type will depend on the point (pt) size of the letters as can be shown below. For a break down of the number of each letters you will receive in a set, please contact us.

Quads & Spacers

In addition to choosing type, you will also require suitable size 'Slip Cases' to hold letters in a straight line inside the machine as we as 'Quads & Spacers'.. These items can be found on Page 5.

Brass Letters

If you are looking to print onto soft leather, then you may benefit from deeper etched brass letters which we also supply, made to order. Please refer to Page 7 for details and prices.

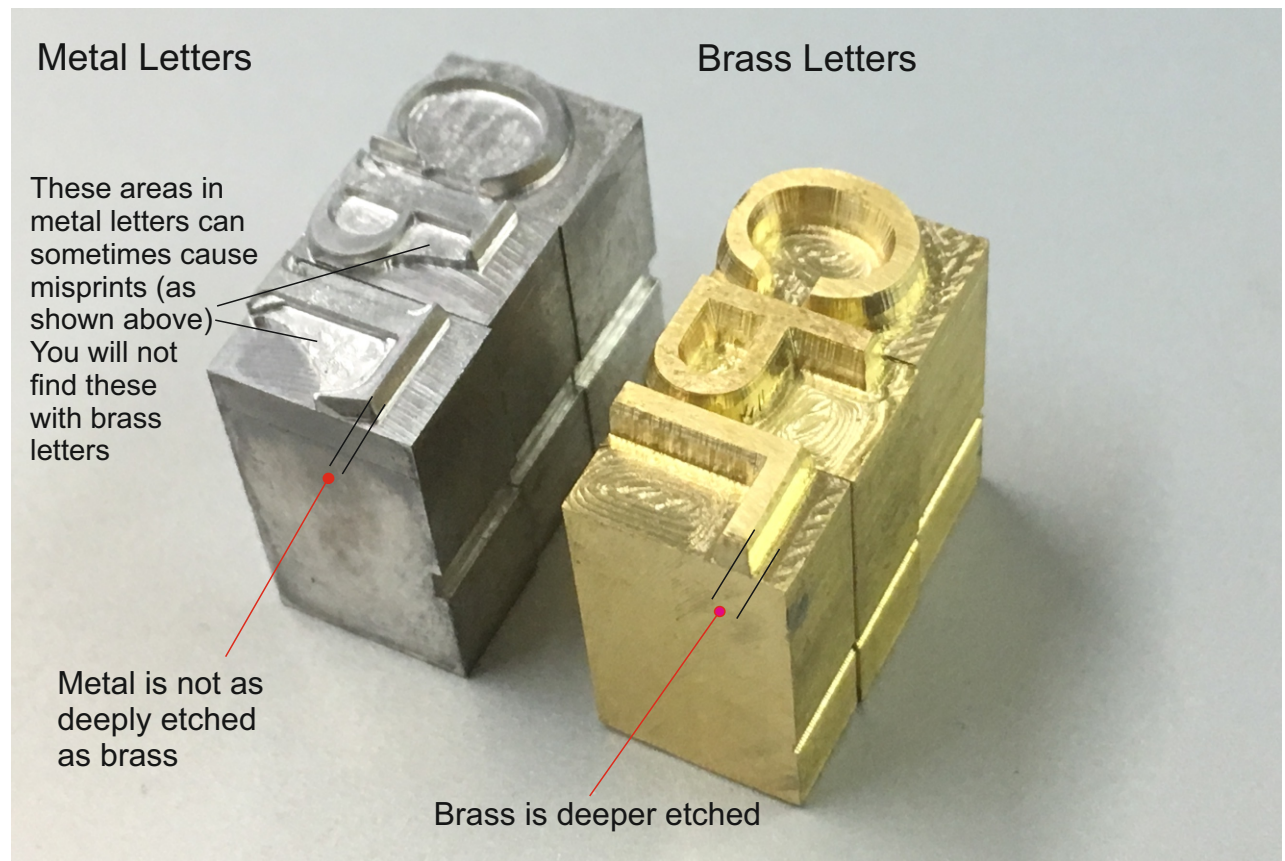
Compare metal vs brass letters on next page.

Some of our most popular
Typefaces for Personalisation work

Gill Sans Medium	Rockwell Medium
Gill Sans Bold	Times New Roman
Perpetua	Times Bold
Perpetua Bold	Univers Light
Plantin	Univers Medium
	Univers Bold

Metal vs Brass Letters & Dies

Metal letters are generally fine for printing onto leather. However, if the leather is soft and you press hard into the leather, then you can sometimes get misprints as shown in first image below (marked by the two circles)



NEW!

DIE CUTTING MACHINE for Paper, Card, Leather etc.

